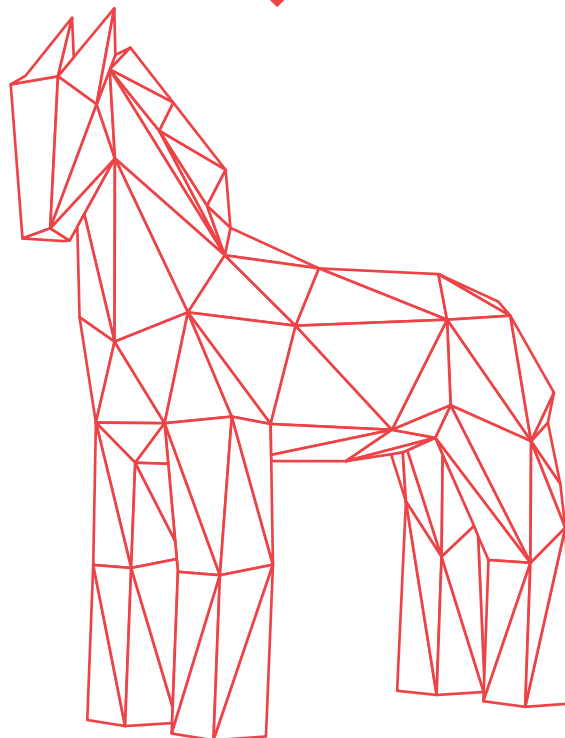
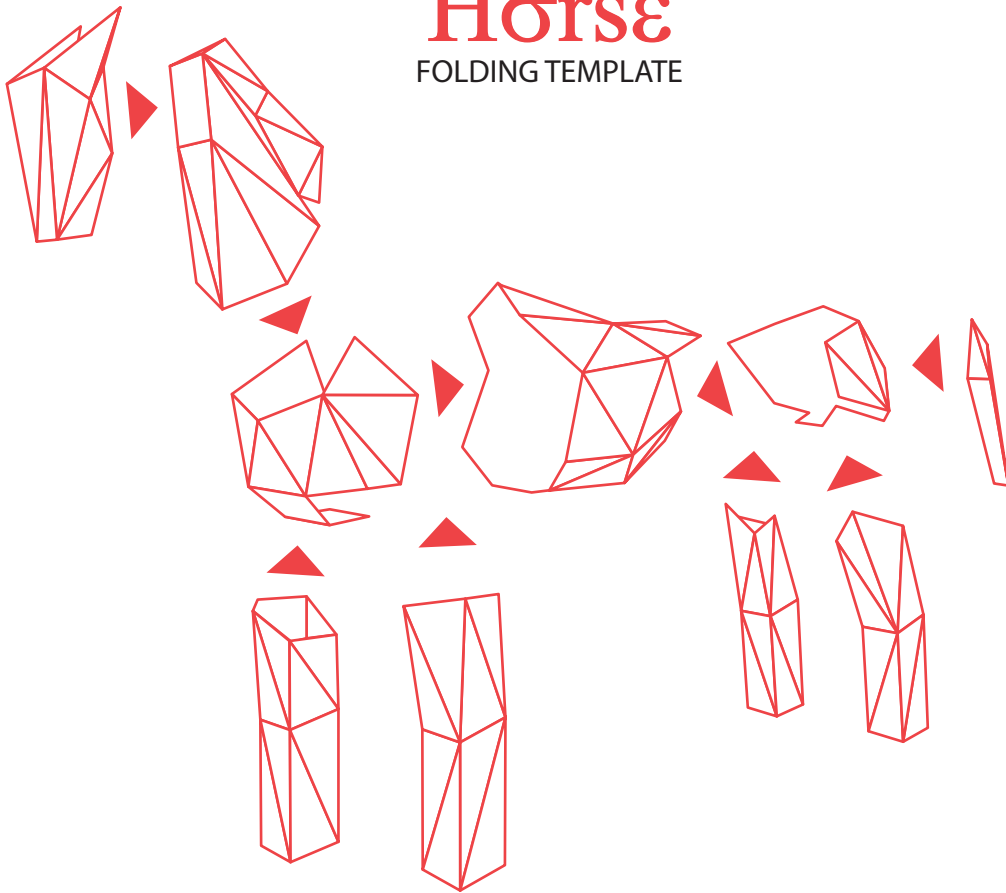


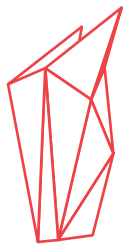
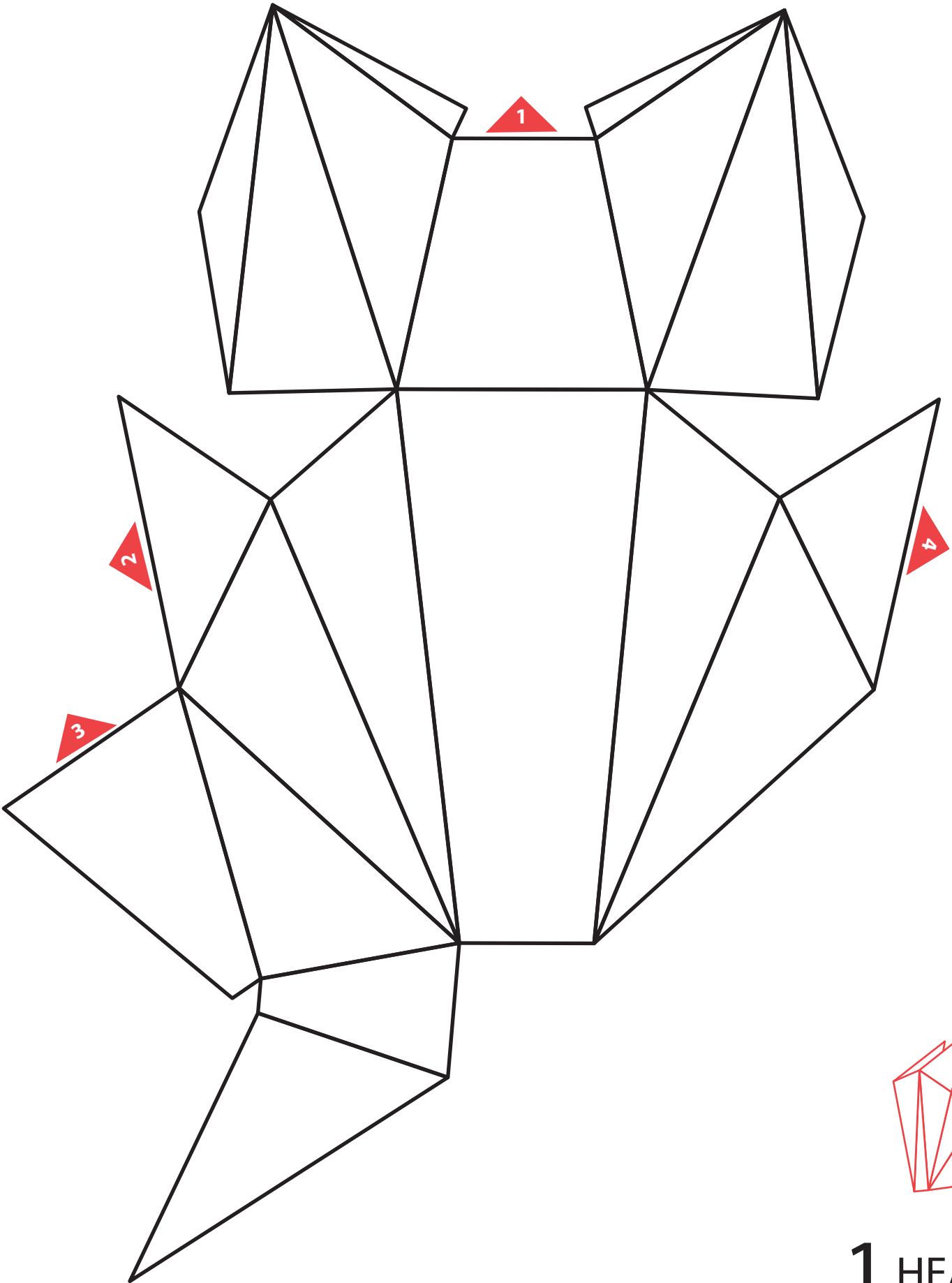
Τρόζαη Horse

FOLDING TEMPLATE

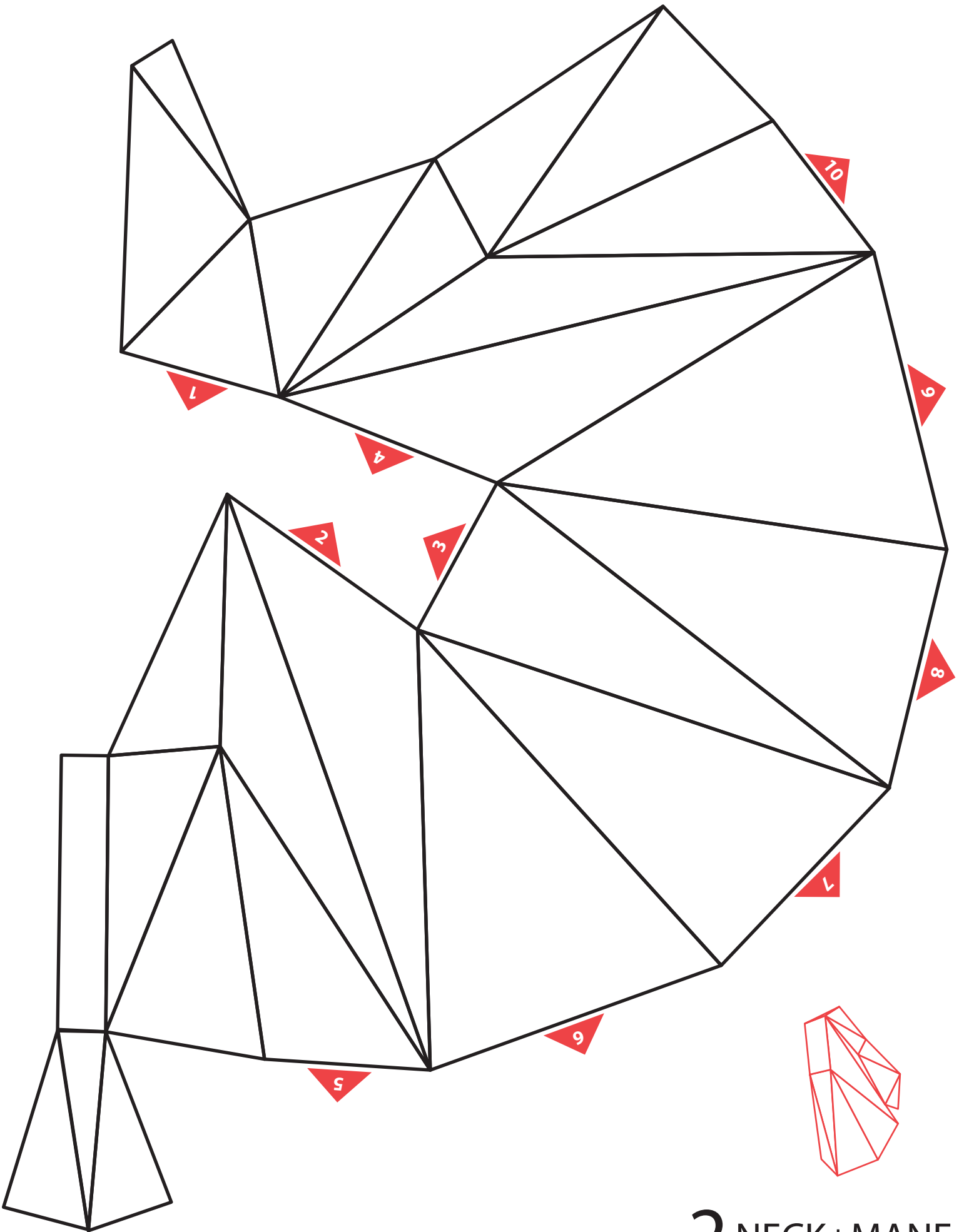


INSTRUCTIONS

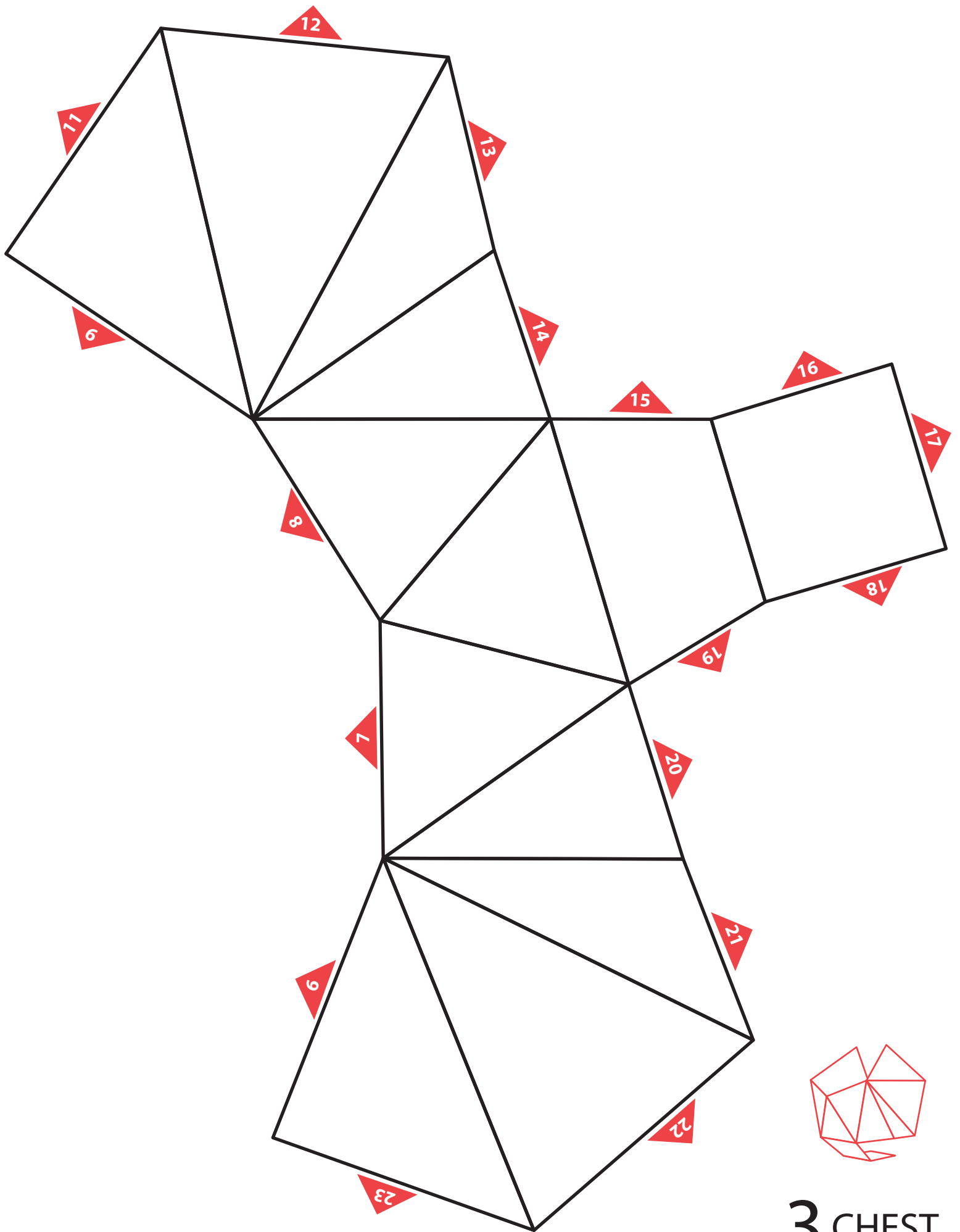
- ▶ PRINT on strong paper
- ▶ CUT along outer lines with knife and ruler (numbered markers are only indicators and don't need to be cut out)
- ▶ SCORE slightly inner lines with knife - to ease folding along straight edges
- ▶ FOLD and TAPE individual body parts (use tape on inside or outside - however you seem fit)
- ▶ COMBINE and TAPE all body parts (if unclear check numbered MARKERS to indicate which edges should merge)
- ▶ TAKE IT OUT, SHOW IT OFF and don't forget to send us images!



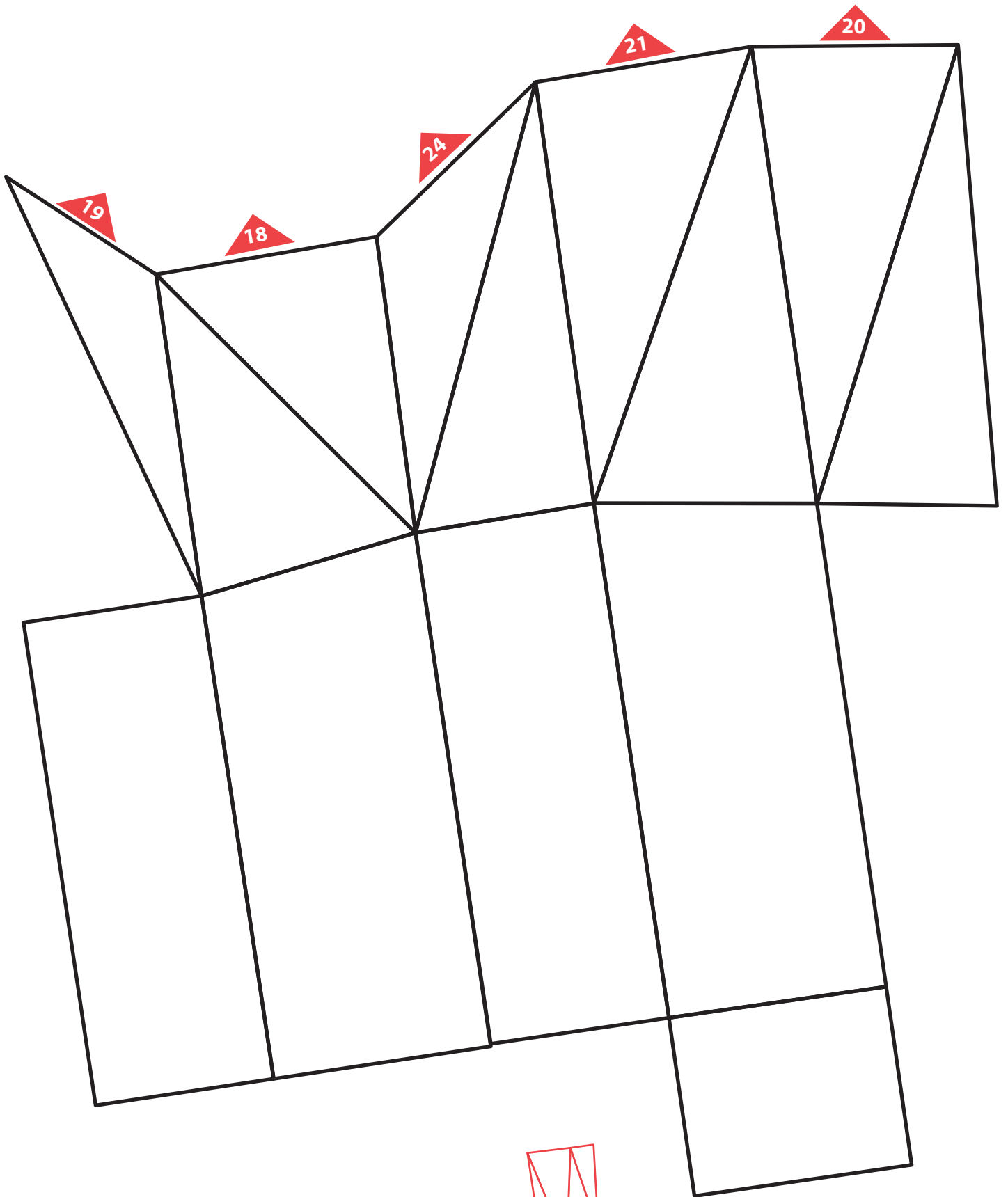
1 HEAD



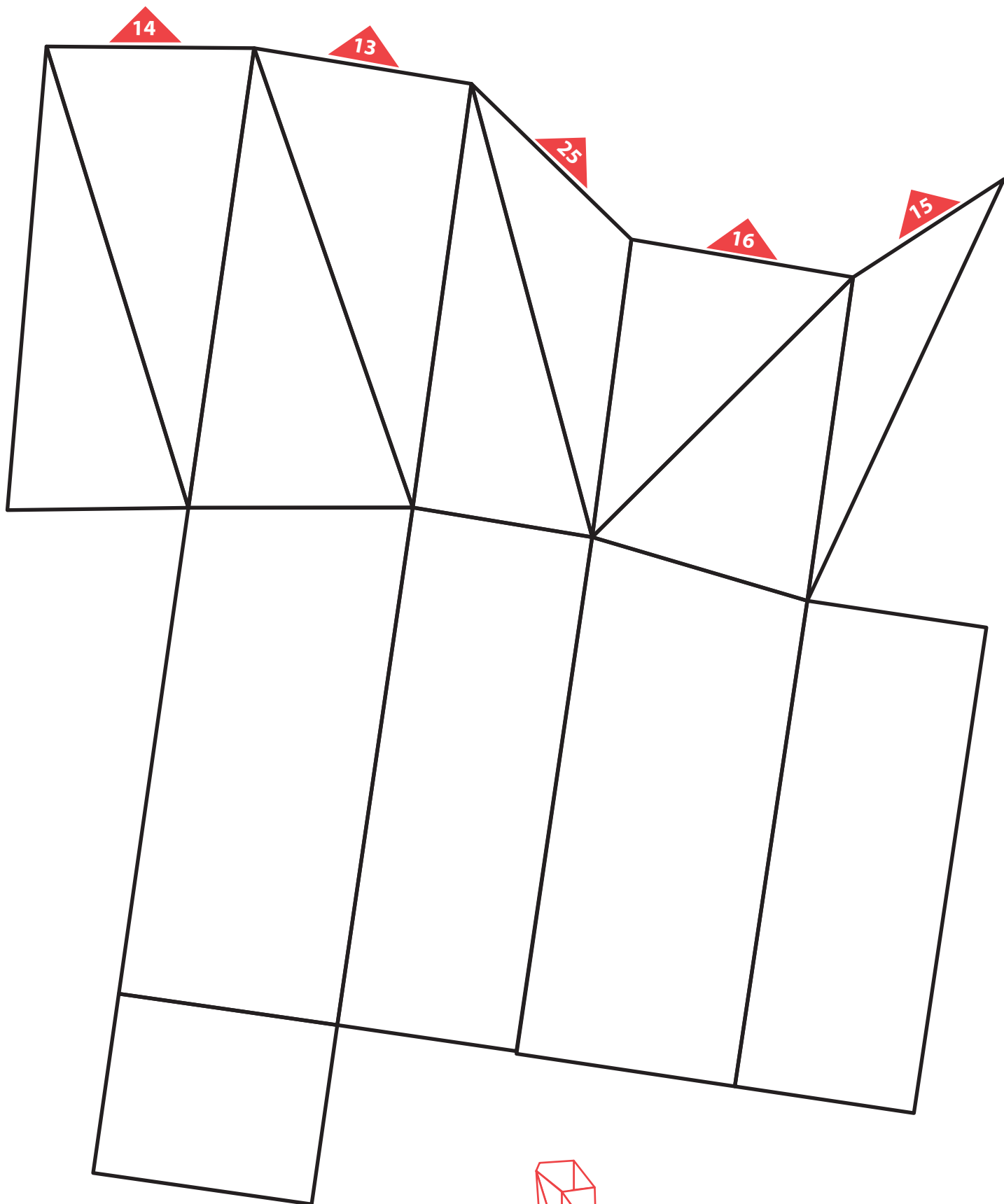
2 NECK+MANE



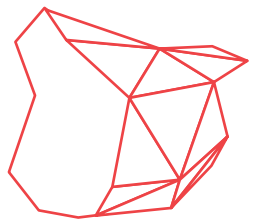
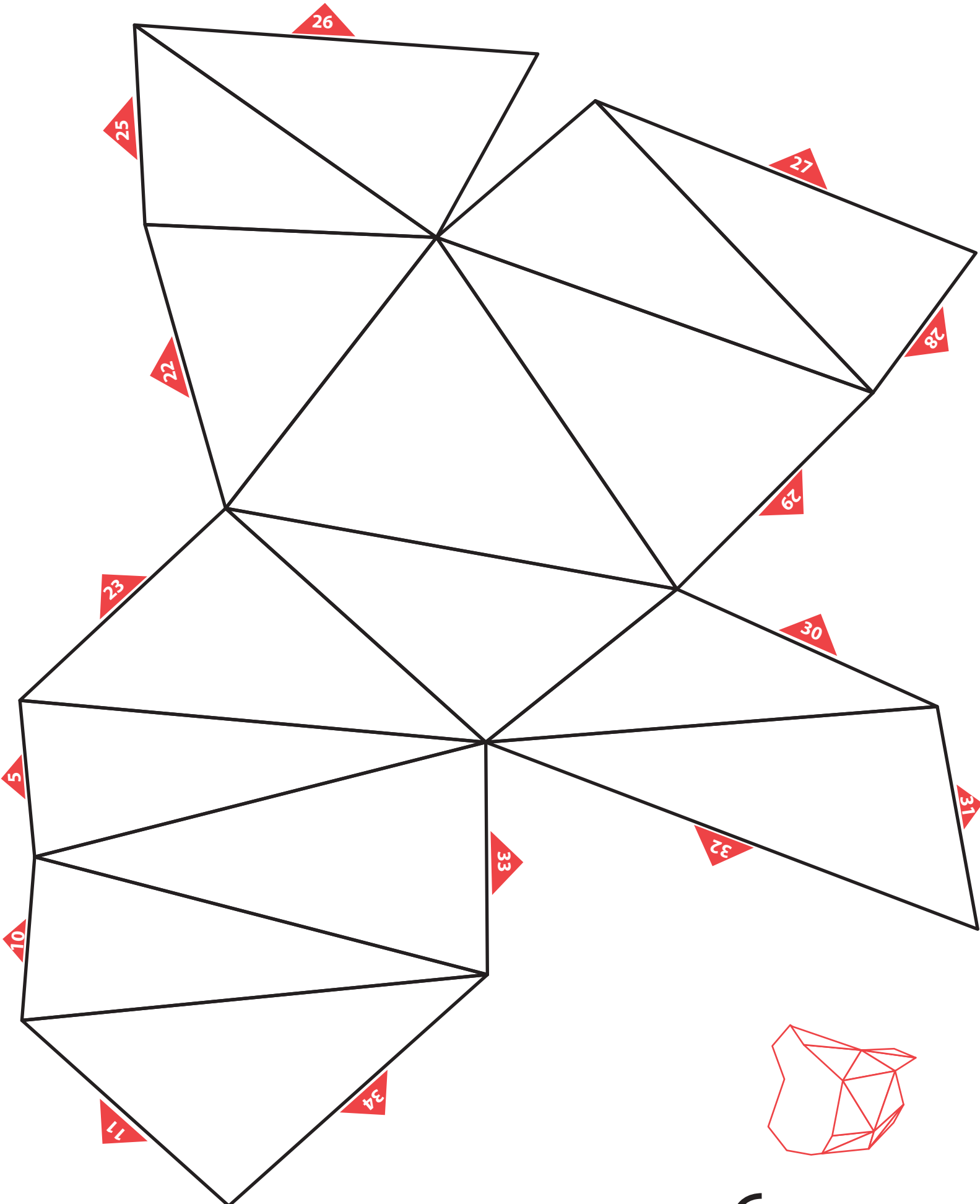
3 CHEST

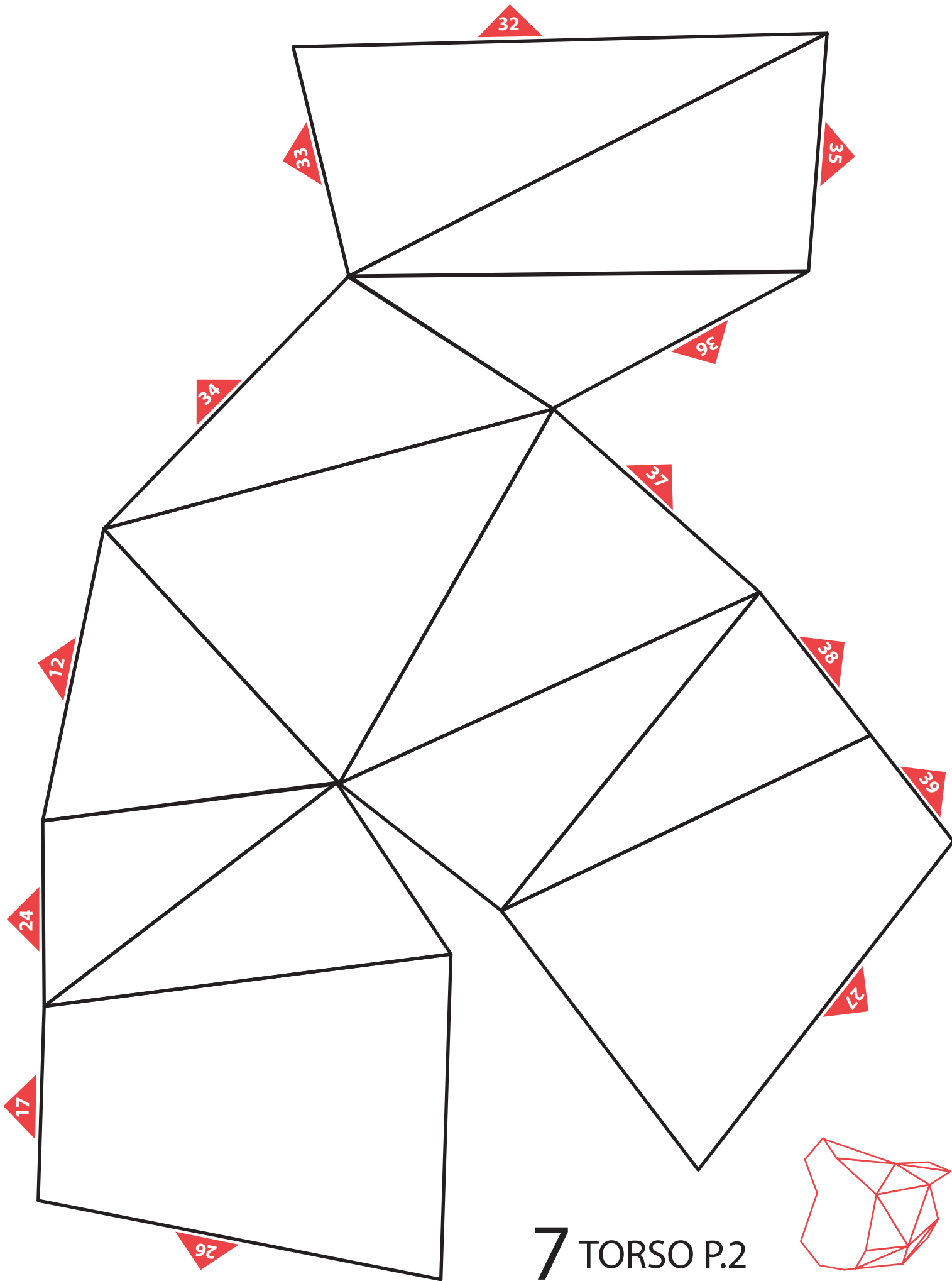


4 LEFT FRONT LEG

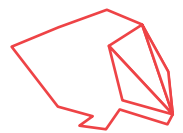
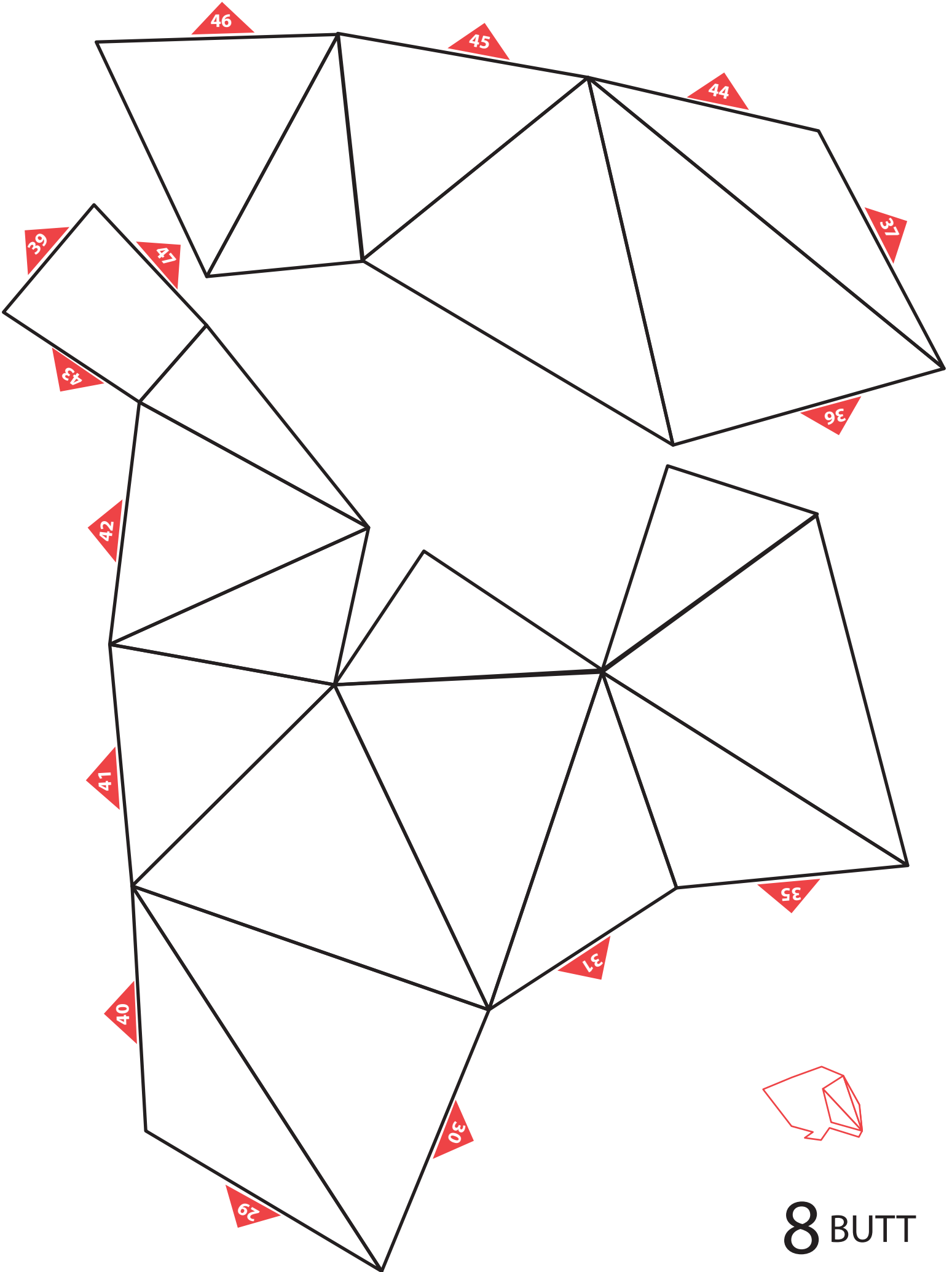


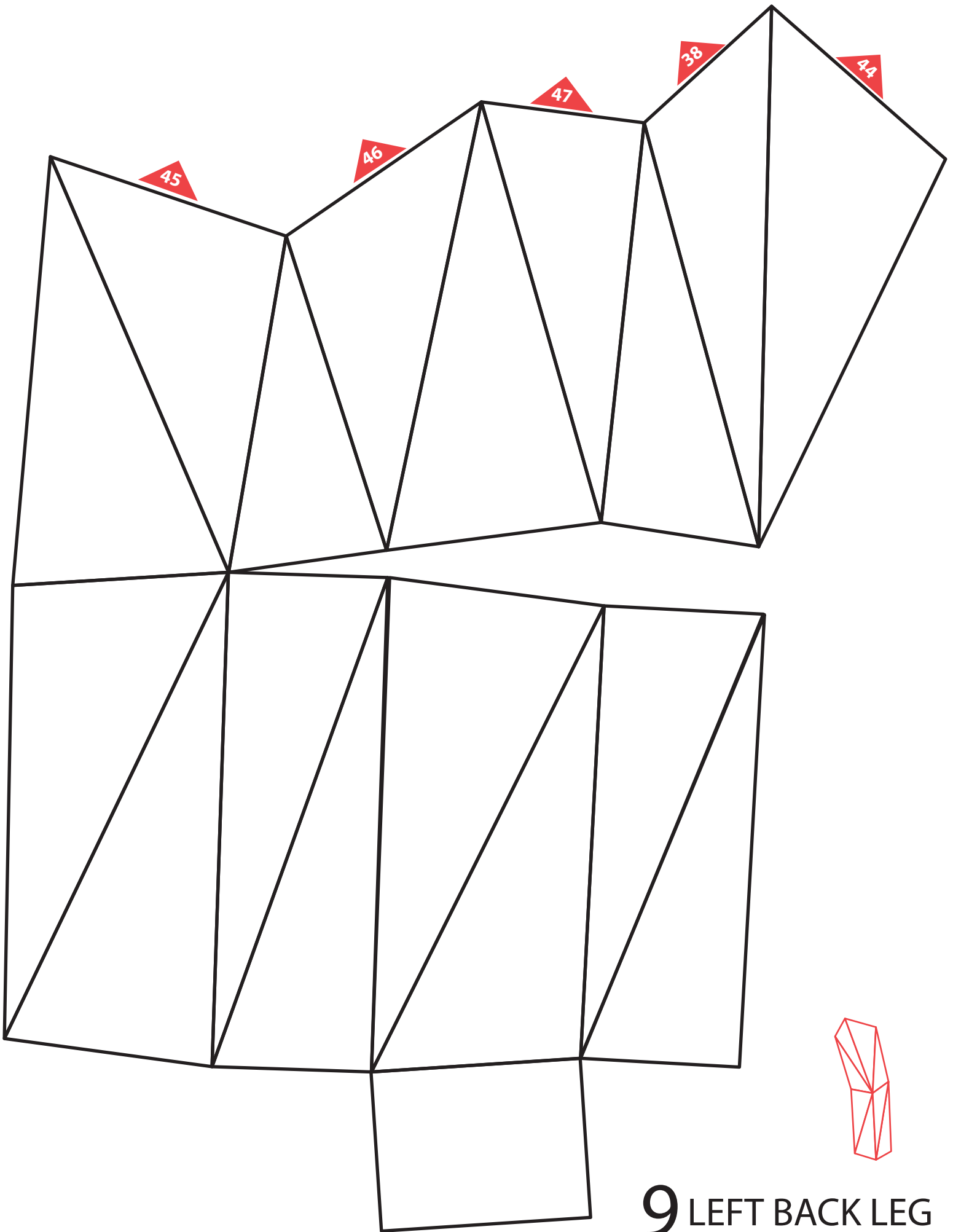
5 RIGHT FRONT LEG



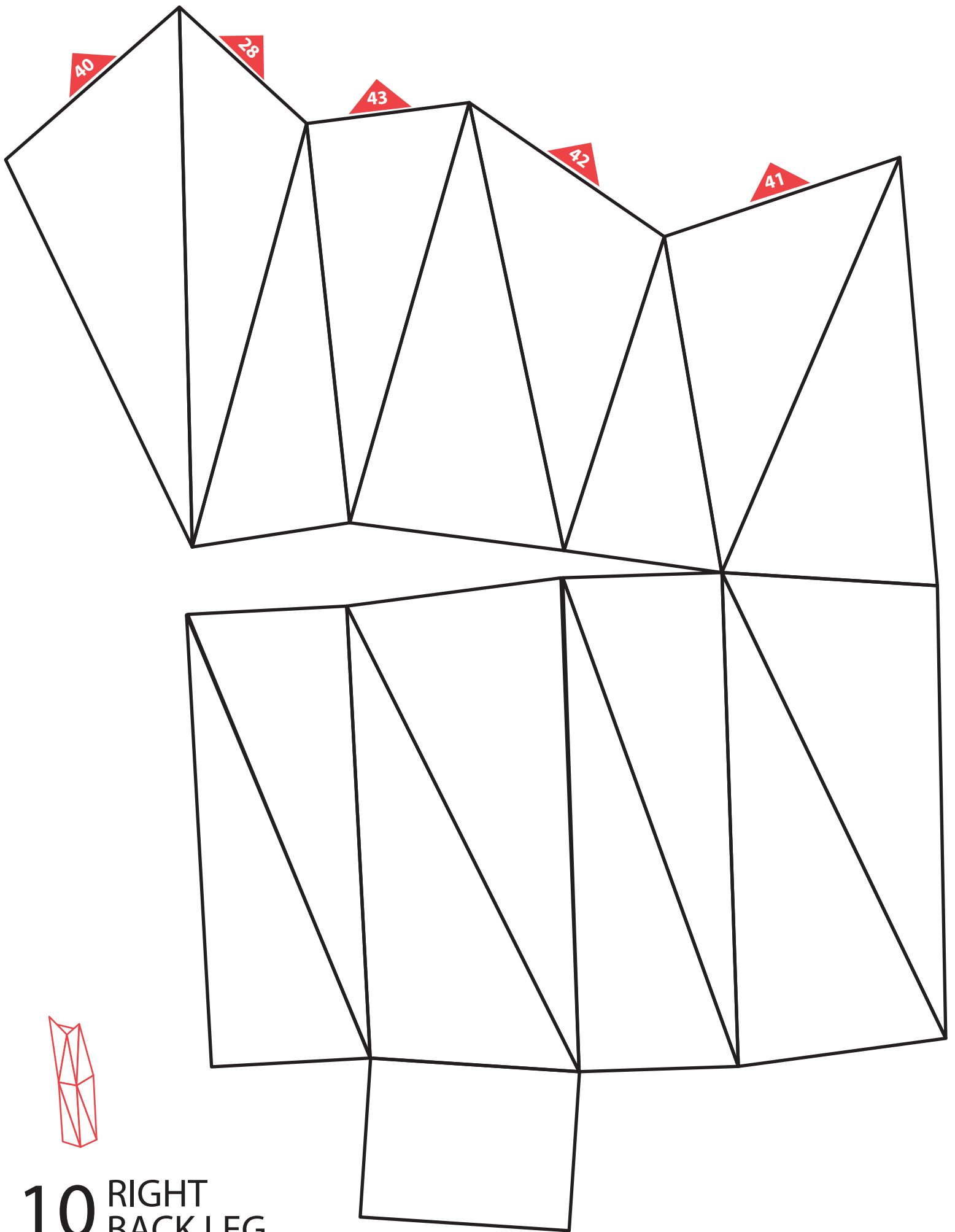


7 TORSO P.2





9 LEFT BACK LEG



10 RIGHT
BACK LEG

